

EtonHouse®
International Education Group

INSPIRE
INNOVATE
CREATE



FOUNDER'S MESSAGE



The world is changing at a breakneck speed. With children growing up in such an exciting, fast-paced environment, we at EtonHouse feel a great need to secure their success in the unknown future. Knowledge alone will not ensure that our young ones will grow up with the competence and skills to adapt to disruptions and conquer what the future holds. Inspiration, creativity, empathy, critical thinking and problem-solving skills are hard to nurture but absolutely essential for the future.

As a mother of three, I understand the challenges that parents face. I remember fighting battles with my children's schools, where educators were determined to mould compliant children according to the norm. Children's thoughts are the purest, most creative and awe-inspiring. Why should we change them? We should instead listen to them, respect them and nurture them.

“ Children's thoughts are the purest, most
**CREATIVE AND
AWE-INSPIRING.** ”

Creativity should be celebrated in schools, not stifled. That was my dream many years ago when I started EtonHouse. It continues to motivate me. I often meet EtonHouse graduates who are now in the workforce doing the most amazing things; be it in music, art, research, finance and many more professions. More importantly, what touches me is that they have all grown up to be respectful, happy and confident individuals.

My message to all past, future and current EtonHouse parents is to celebrate the wonders of childhood, nurture creativity, and be a part of an inspiring learning journey with your children.

Mrs Ng Gim Choo
Founder

INFANT CARE

(< 18 months)

Experience a boutique infant care journey where personalised care meets early education. With a rich teacher to student ratio of 1:2, it is ensured that every infant receives individualised attention, along with a high level of care and safety.

PRE-SCHOOL

(18 months - 6 years old)

An integrated inquiry programme that nurtures your young ones to become lifelong learners

- EtonHouse 'Inquire, Think, Learn' curriculum
- International Baccalaureate Primary Years Programme (IB PYP)
- Bilingual foundation with Mandarin as a life skill



P R I M A R Y

Empowerment of your children to take ownership of their own learning; building on skills nurtured in their early years so that they develop their own ideas, concepts and creations

- International Baccalaureate Primary Years Programme (IB PYP)
- Highly regarded Mandarin bilingual immersion programme and additional language programmes in Mandarin, Hindi and Japanese
- SMART programme focusing on Science, Maths, Art, Research and Technology



S E C O N D A R Y

An internationally recognised programme that supports your children in developing their skills and knowledge to succeed in the future

- International General Certificate of Secondary Education (IGCSE) Programme
- Robust additional language programme in Mandarin, Japanese and Spanish
- Highly personalised approach to education aligned to individual career choices



H I G H S C H O O L

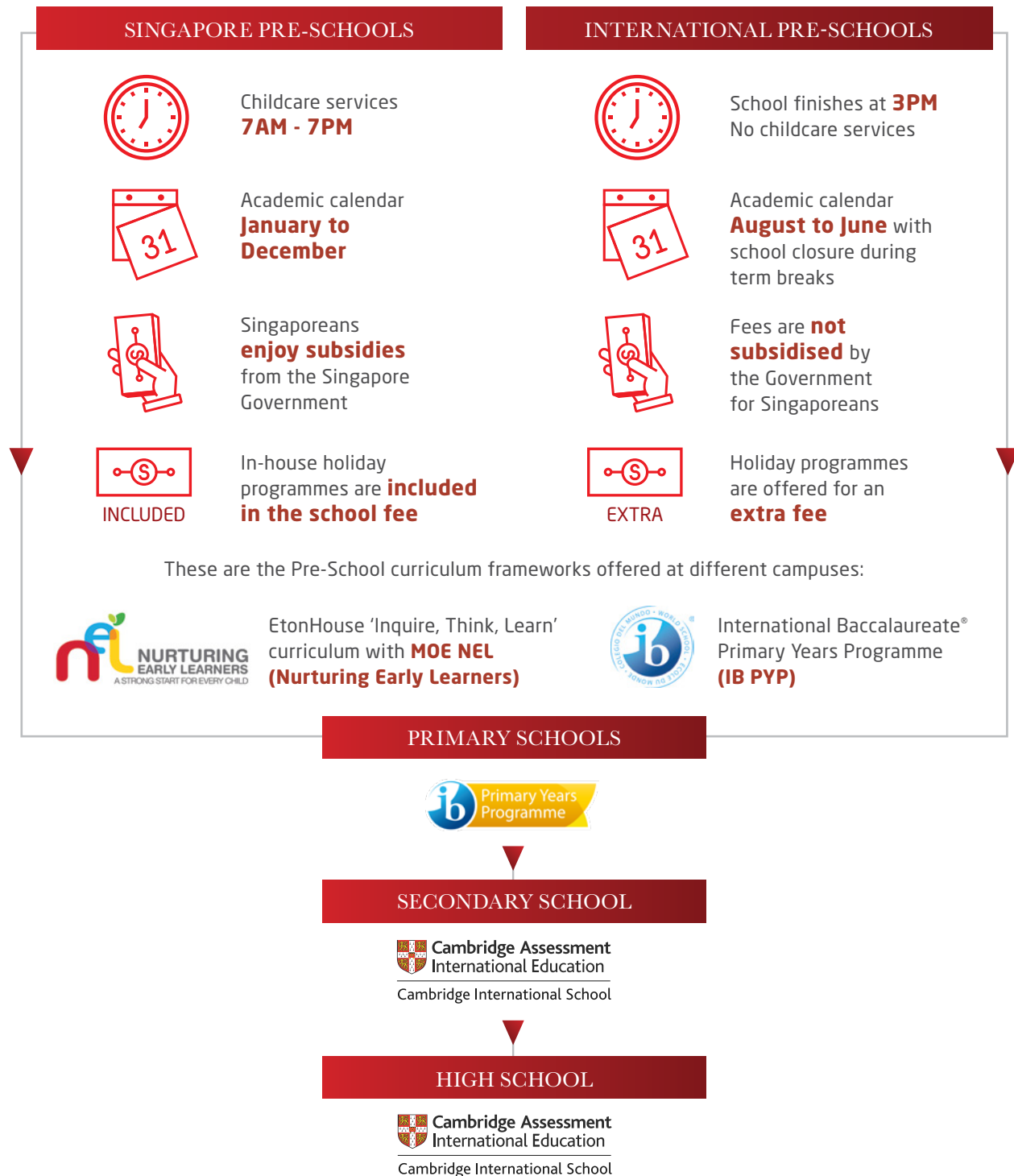
22nd century education designed to nurture resilient, capable and confident problems solvers, collaborative communicators and leaders for a life beyond school

- International Advanced-Levels (IAL)
- Internationally recognised qualifications, highly respected by top universities and employers
- Bespoke EtonCore programme, Lifeskills Course and a University and Career Guidance Programme that prepare students' aspirations



AN OVERVIEW OF ETONHOUSE SCHOOLS IN SINGAPORE

EtonHouse provides a comprehensive education pathway for your children, from the early years through their secondary and high school phase. The pathway begins with programmes offered either in a Singapore or International Pre-School setting. After your children complete their Pre-School education in either setting, you may enrol them at any EtonHouse International School with primary, secondary and high school programmes. This will allow a seamless transition from one learning phase to the next within the EtonHouse community.



ETONHOUSE

INFANT CARE & PRE-SCHOOL

GARDENS BY THE BAY*

18 Marina Gardens Drive, Gardens by the Bay, Bayfront Pavilion,
Singapore 018953

Tel: +65 6229 58151 Email: gardens@etonhouse.edu.sg

PRE-SCHOOL

BEACH*

31 Beach View, #02-01 & #03-01 Palawan Kidz City, Sentosa,
Singapore 098008

Tel: +65 6229 5741 Email: beach@etonhouse.edu.sg

CITY*

16 Collyer Quay, #03-00, Singapore 049318

Tel: +65 6221 1050 Email: city@etonhouse.edu.sg

CLAYMORE

15 Claymore Road, Singapore 229542

Tel: +65 6737 3322 Email: claymore@etonhouse.edu.sg

MOUNTBATTEN 223*

223 Mountbatten Road, #01-18, Singapore 398008

Tel: +65 6440 5100 Email: m223@etonhouse.edu.sg

NATURE*

718 Mountbatten Road, Singapore 437738

Tel: +65 6846 3322 Email: nature@etonhouse.edu.sg



NEWTON*

39 Newton Road, Singapore 307966

Tel: +65 6352 3322 Email: newton@etonhouse.edu.sg



UPPER BUKIT TIMAH*

215 Upper Bukit Timah Road, Singapore 588184

Tel: +65 6762 3322 Email: 215BT@etonhouse.edu.sg

VANDA*

1 Vanda Road, Singapore 287771

Tel: +65 6468 7880 Email: vanda@etonhouse.edu.sg

ZHONG HUA (MANDARIN IMMERSION)*

681 Bukit Timah Road, #01-03, Singapore 269782

Tel: +65 6467 3322 Email: hceh@etonhouse.edu.sg

PRE-SCHOOL & PRIMARY

BROADRICK

51 Broadrick Road, Singapore 439501

Tel: +65 6346 6922 Email: broadrick@etonhouse.edu.sg



PRIMARY, SECONDARY, & HIGH SCHOOL

ORCHARD

10 Tanglin Road, Singapore 247908

Tel: +65 6513 1155 Email: orchard@etonhouse.edu.sg



MIDDLETON

PRE-SCHOOL, PRIMARY, SECONDARY, & HIGH SCHOOL

TAMPINES

2 Tampines Street 92, Singapore 528889

Tel: +65 6636 1155 Email: tampines@middleton.edu.sg



*ECDA pre-school



OVER 3 DECADES
OF SUCCESS



INQUIRY-BASED
LEARNING APPROACH



SUCCESSFUL TRACK
RECORD OF GRADUATES



SPECIALIST
STUDIOS



INTEGRATED
OUTDOOR LEARNING



GLOBAL
CLASSROOM



AWARD WINNING
LANGUAGE
PROGRAMMES

“ WISDOM
begins in wonder. ”

Socrates, Philosopher





VALUING YOUR CHILDREN'S UNIQUENESS AS A GIFT AND OPPORTUNITY

EtonHouse is a community of learners who embrace the Image of Child philosophy. We respect every child as a curious, communicative, capable, confident and respected individual. Recognising that this sense of wonder defines every child's attitude towards learning, EtonHouse adheres to an inquiry-based approach to learning through the 'Inquire, Think, Learn' programme.

Aligned with international best practice, our Pre-School curriculum builds up your children's mathematical, scientific and technological capabilities so that they can take full advantage of our inquiry-based approach. We also focus on language and literacy programmes to transform your children into effective communicators via print, digital, visual and other artistic platforms. With our bilingual learning programmes, your children will have a myriad of opportunities to communicate with ease in English and Mandarin.

INFANT CARE CURRICULUM

INFANT CARE (< 18 MONTHS)

Experience a boutique infant care journey where personalised care meets early education. With a very rich teacher-to-student ratio of 1: 2, each infant receives individualised attention, promoting holistic development and ensuring a high level of care and safety. Our programme nurtures curiosity in an explorative environment filled with books, learning resources, and cognitive tools, fostering sensory-rich experiences that enhance motor skills and problem-solving abilities.

PRE-SCHOOL CURRICULUM

INQUIRY AS THE PREMISE FOR LEARNING

Optimising your children's brain development from their early years is critical to learning for life. EtonHouse leverages the inquiry-based approach, which encourages your children to imagine, innovate, invent and collaborate.

This approach develops all the necessary skills and disposition required to succeed in the 21st century. With their teachers' facilitation, your children will have multiple opportunities to expand their knowledge and grow their confidence in tackling more sophisticated and complex discoveries.

THE 100 LANGUAGES OF CHILDREN

Spoken language is just one of the many methods that children use to communicate their thoughts. In EtonHouse Pre-Schools, the Arts provide unique possibilities for your children to express themselves confidently and creatively.

Learning invitations are intentionally planned in order to captivate their wonder and curiosity, develop their understanding and enhance their engagement. Our specialist and classroom teachers support the Arts programme in innovative ways that nurture the '100 languages of children'.






OUTDOOR LEARNING IN TOUCH WITH NATURE

An integral part of an EtonHouse education lies in giving your children access to world-class education. This means nurturing active physical engagement and nature-based learning from their early years. Our innovative programmes on the other hand, lay the foundation to ensure healthy bodies and minds thrive. We nurture your children's respect for the environment and appreciation of their role in caring for our planet.

ENVIRONMENTS THAT INSPIRE

Your children learn from you, their peers and teachers, and through interactions with their environment. Honouring EtonHouse's Image of Child, our curriculum creates and organises environments that respect your children's ideas, cultures, interests, as well as beauty and order. Learning spaces are inviting, flexible and natural, inspiring your children to explore their surroundings. Thoughtfully designed and richly resourced, our environments extend and challenge your children's thinking in relation to their learning goals.





“ Our task, regarding creativity,
is to help children

**CLIMB THEIR
OWN MOUNTAINS,**
as high as possible.
No one can do more. ”

Loris Malaguzzi, Founder of Reggio Emilia schools



CHALLENGING STUDENTS TO FULFIL THEIR TRUE POTENTIAL

EtonHouse International Schools are accredited 'IB World Schools' offering the International Baccalaureate Primary Years Programme (IB PYP). The IB PYP is an integrated, transdisciplinary curriculum that focuses on the development of the whole child, encompassing social, physical, emotional and cultural needs in addition to academic welfare.

By adopting an inquiry-based approach, we support your children to develop an understanding of important concepts, acquire essential skills and knowledge, develop particular attributes, and learn to take socially responsible actions. The Primary Programme builds a strong foundation in your children's early years. It offers them challenging and hands-on experiences to acquire knowledge, skills, and dispositions - placing special focus on the IB Learner Profile; attributes that develop internationally-minded learners.

PRIMARY CURRICULUM



COMMUNITY

There is a distinctively warm community feel that is unique to each EtonHouse school. Every teacher knows every student. This translates into an environment where your children feel valued in the classroom and also within the school community. Learning is differentiated to cater to the unique interests, abilities and learning styles of each student. Your children are encouraged to become independent and self-motivated learners in an environment that is safe, inviting and challenging at the same time.

TRUSTED CURRICULUM

Delivered over the past two decades, the EtonHouse Primary Programme is a trusted programme in international education. Our success lies in a curriculum that delivers the disciplines in an authentic and relevant context for young learners. Your children are exposed to innovative and diverse experiences that hone their social, communication, self-management, research and critical thinking skills.

STRONG ADDITIONAL LANGUAGE FOUNDATION

The first international school to offer bilingual programmes, EtonHouse Broadrick's established Bilingual Immersion Programme offers intensive Mandarin exposure to ensure a high English and Mandarin proficiency level when your child completes Year 6, even for non-native speakers. Our schools are also known for our Mandarin, Japanese, Hindi and English as an Additional Language (EAL) programmes. These programmes provide a rich context for language learning. Coupled with our exploration of cultures through the lenses of the different languages, we offer an excellent opportunity for your children to develop as international-minded students.



DIVERSE SPECIALIST PROGRAMMES

Our specialist lessons support classroom inquiries to ensure the holistic and integrated development of your children.

ART allows your children to explore a range of artistic processes using both traditional approaches and contemporary platforms. Taking a more conceptual approach, our arts programme stimulates innovative and imaginative thinking.

MUSIC is integrated into the mainstream curriculum to promote self-expression, intelligence and creativity. Through a holistic music education, your children will explore traditional and exotic instruments while they themselves develop their music literacy, create music and use technology to produce music videos.

DRAMA gives your children the opportunity to perform on stage and showcase their unique abilities. This builds up their public speaking skills, as well as emotional intelligence and empathy. Your children will also learn script writing, stage production, lighting and sound – all the elements of a successful production.

SPORTS programme includes football, basketball, archery, track and field, netball, cricket, swimming and more. Your children will enjoy the opportunity to get involved in a variety of sporting events as a way to develop their confidence, resilience, grace and humility to succeed and work as a team.

ICT is integrated into the curriculum allowing your children to develop communication and performance skills through coding, programming, multimedia authoring, animation, 3D gaming and more. With these digital tools, your children will be able to actively and effectively engage, create, collaborate, communicate and share their perspectives – lifelong skills that will support their education and their future careers.



“ LOGIC
will get you from A - Z.
IMAGINATION
will get you everywhere. ”

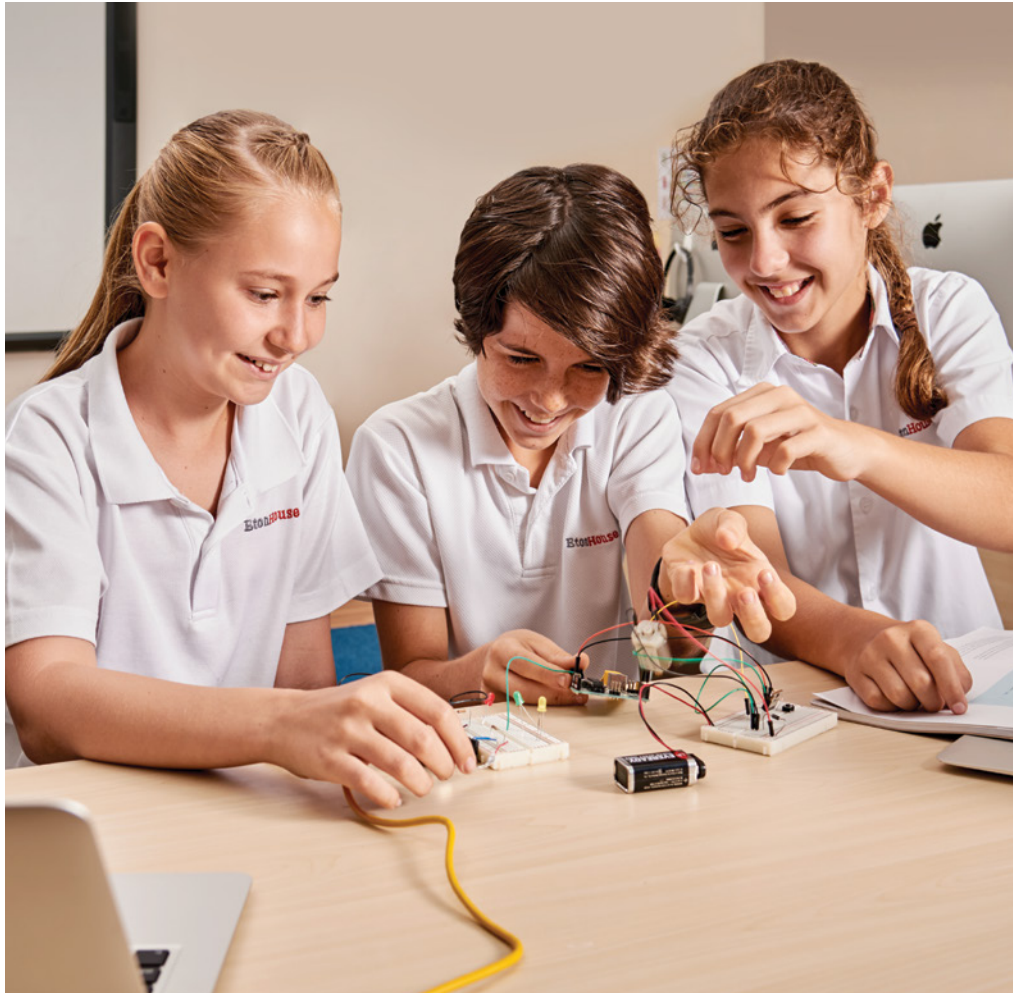
Albert Einstein, Theoretical Physicist



LAYING THE FOUNDATION FOR EVERY STUDENT'S SUCCESS

EtonHouse has a culture of academic rigour, caring and individualised support for students in their Secondary and High School. We apply a fusion of proactive use of information technology and inquiry-based learning to the development of essential skills. In High School, we offer the International A-Levels Programme.

Our curriculum meets the stringent requirements for completing the robust International General Certificate of Secondary Education (IGCSE) Programme undertaken in Years 10 and 11. The IGCSE is the world's most popular international qualification for 14- to 16-year-olds (equivalent to the Cambridge O Level in Singapore).



STUDENT-CENTRIC LEARNING

EtonHouse students are at the centre of everything we do. They help shape our curriculum. Our rich teacher-to-student ratio allows our educators to connect personally with your child and customised their learning experience. This ensures your child receives personalised academic and pastoral support while building their pathway to academic success in IGCSE, International A-Levels and beyond.

INTERDISCIPLINARY APPROACH

Committed to a fluid interdisciplinary approach to education, EtonHouse's boutique school environment ensures that learning objectives in one subject flow into others, consolidating learning and allowing your children to make personally meaningful connections through experiential tasks.

ROBUST ADDITIONAL LANGUAGE FOUNDATION

EtonHouse has a highly successful additional language programme that has been nurturing truly bilingual learners for decades. In the Secondary level, we build on the strong additional language foundation in your child's early and Primary Years. At the IGCSE level, your child can choose from other Asian and European languages.

We have a robust English as an Additional Language (EAL) programme for non-native English speakers.



WELL-ROUNDED SPECIALIST PROGRAMMES

SPORTS

The Sports Programme focuses on fitness and stamina training, competitive sports and health education. Your children have the opportunity to develop different tactics and skills, and understand the value of nutrition, mental agility as well as the impact of drugs in sports. Outdoor activities such as kayaking, rock climbing, archery and self-defence are also available.

VISUAL ARTS

Visual arts projects may include exploring Propaganda Art, studying self-portraits using different media, understanding design-to-create processes, working with clay to fully appreciate their study of the Renaissance, or discovering art through history, from cave art to contemporary design.

ICT

Through robotics and programming, your children are able to enhance their logical thinking, problem-solving skills and work management styles. ICT covers 3D design, spatial awareness and intelligence, and engineering so your children can build their own prototypes. They also learn how to become responsible citizens who leave behind a positive digital footprint.

MUSIC AND PERFORMING ARTS

Students enjoy several opportunities to be involved in school events such as the end-of-year production, school choir and other events throughout the year. Visiting artists and competitions help test your children's skills. They also learn how to play different musical instruments and create their own compositions.

“What good is an idea
if it remains an idea?
Try. Experiment. Iterate. Fail.
Try again.

CHANGE THE WORLD.”

Simon Sinek





NURTURING AN INNOVATION MINDSET

In High School, student agency drives the programme. We believe that students are protagonists of change and in order to change the world, they should be equipped with thinking that drives growth and innovation. Building on the rigorous foundation of the IGCSE, the students in high school prepare not just for University but to take on the world.

In years 12 and 13, 16 to 18 year olds prepare for the International A-Levels, an internationally recognised and academically challenging qualification that is recognised in Universities all over the world.

HIGH SCHOOL CURRICULUM



STUDENT AGENCY

The school promotes student agency by giving students a voice, and encourages them to initiate their own learning. Students have the space to inquire, think and learn, whilst under the guidance of a teacher, who plays a facilitating/coaching role. This process nurtures highly engaged students who are motivated to push learning boundaries.

COLLEGE COUNSELLING

Deciding where and what to study for college has a lifelong impact on the students and their future career. The school prioritises college counselling and career guidance by giving students in-depth practical advice, serving as a bridge to transit them from one life stage to another. We are a UCAS registered centre too.

PASTORAL CARE

The EtonHouse ethos is centred around strong pastoral care within the small and boutique nature of the campus. Families can look forward to a school where rich interactions between the staff and students form the basis of the curriculum with a personalised approach to nurture students to achieve their fullest potential.



DYNAMIC AND CHALLENGING

RIGOROUS ACADEMICS FOR FUTURE SUCCESS

Through a robust and academically challenging programme, the high school years set the stage for success in university placements and future career opportunities. Students may choose 3 or 4 subjects that align with their interests and strengths or are necessary for university admissions. This early specialisation provides a head start to be successful in their future university courses.

EXTENDED PROJECT QUALIFICATION

The EPQ offers students the opportunity to develop their independent learning skills in preparation for university and to demonstrate organisation, planning, research, critical thinking, problem-solving and presentation skills through a project of their own choosing. By demonstrating skills, initiative, and interest in a subject beyond the classroom, the EPQ can certainly be advantageous to a candidate's university application.

THE ETONCORE

Complementing the International A-Levels programme will be our bespoke EtonCore programme which provides students with a holistic education that goes beyond academics. A combination of elective and accredited pathways, each student will be able to select an individualised and personalised journey comprising elective aspects of the EtonCore where they will have opportunities to develop their interests and nurture student agency and a growth mindset. It includes the Duke of Edinburgh Award, international collaboration, partnerships and residential programmes, as well as community service through the EtonHouse Community Fund. This unique programme aims to suit the aspirations of our students in line with our core values by nurturing learners who are independent and take responsibility for their future success. It also enriches the High School experience and supports students in achieving their aspirations and university choices.



“ THE BEAUTIFUL
THING ABOUT
LEARNING

is that nobody can take it
away from you. ”

B.B. King, American Blues Singer



COMMUNICATING FLUENTLY AND EFFECTIVELY

Our language programmes have been very successful through our commitment to innovation and best practice. Delivered in a bilingual environment at the Pre-School level, with a bilingual stream option in the Primary Years, our EtonHouse Mandarin language programme offers cultural immersion and learning experiences in language acquisition. That is why language learning includes elements of history; geography and current affairs; philosophy; literature and the arts; and traditions and lifestyles. These experiences make your children truly bilingual and respectful towards other languages and cultures.

Those looking for an intensive Mandarin language education in the early years should consider the ZhongHua Mandarin Immersion Programme that is offered at EtonHouse Zhong Hua, Newton, Vanda, Upper Bukit Timah, and Quayside Pre-School. A Bilingual Immersion Programme is also available for Year 1 to Year 6 at EtonHouse International School at Broadrick. Non-native English speakers will be well-supported by our English as an Additional Language (EAL) programme. Other language programmes include Japanese, Hindi and Spanish.

Embracing languages as a community, EtonHouse invites you to participate in a wide range of cultural activities.

KEY MILESTONES OF ETONHOUSE



First EtonHouse school opened on Broadrick Road in the East Coast, in Singapore

1995

1



First campus in China opened with EtonHouse International School in Suzhou

2003

2

EtonHouse Founder Mrs Ng Gim Choo awarded 'Woman of Benevolence' by Suzhou City, China for her significant contributions to the community

2004

3



EtonHouse Broadrick awarded the IB World School status

2007

4

First private Pre-School to collaborate with PAP Community Foundation in Singapore with the launch of **Hampton Pre-School**

EtonHouse Founder became the **First Singaporean woman to receive the 'Freedom of the City of London'** in honour of her contribution to international education

2009

5



The first EtonHouse campus, on Broadrick Road.

18

2023

EtonHouse Garden School by the Bay was launched

EtonHouse Founder wins **Large/Listed Companies Category at Women Entrepreneur Awards 2023**

ZhongHua Mandarin Immersion Programme expanded to **Upper Bukit Timah** campus in Singapore

17

2022

Middleton International School opened its third campus in Singapore

The Eton Academy expanded to five centres

EtonHouse Founder named **Her World Woman of the Year 2022**

16

2021

Middleton International Division opened in **Suzhou**

ZhongHua Mandarin Immersion Programme expanded to **Mountbatten 718** and **Robertson Walk** campuses in Singapore



Two Pre-Schools in Singapore became the **first stand-alone Pre-Schools to receive the IB World School status**

EtonHouse schools opened in **Japan and Malaysia**



2010

6

15

2020

EtonHouse celebrates its **25th Anniversary**



EtonHouse Orchard awarded the **IB World School** status



Launch of **The Eton Academy**, the enrichment arm of EtonHouse

Launch of **The EtonHouse Academic Scholarships**

EtonHouse Founder received the **'Jiangsu Friendship Award'**, the highest award given to foreign experts by the Jiangsu People's Government in China

2011

7

2019

EtonHouse Founder, received the **EY Entrepreneur of the Year Award (Education)**

EtonHouse Community Fund received the **MSF Community Cares Award**

Middleton International Pre-School opened in **Ho Chi Minh City, Vietnam**

First organisation to officially represent Reggio Children in Asia by launching REACH (Reggio Emilia in Asia for Children)

EtonHouse Founder received the **'Active Participation of Foreign Affairs'** award from the Mayor of Yiwu, China

Second Hampton Pre-School in Singapore opened - a project initiated by the late Mr Lee Kuan Yew, Singapore's Founding Father

First campus opened in **Vietnam**



EtonHouse International School in Suzhou ranked in **China's 500 Best Elementary Schools**

2013

8

2018

Middleton International School opened its second campus in Tampines

Opened international school campus in Orchard Pathway from Primary to Senior Years

First campus opened in **Myanmar**



E-Bridge Pre-Schools launched under the **Anchor Operator Scheme** by the Government of Singapore to serve the local communities

2014

9

12

2017

First campus opened in **Bahrain**



Middleton International School launched in **Singapore**, providing international education at affordable fees

EtonHouse Zhong Hua Pre-School opened, becoming **Singapore's first full Mandarin immersion childcare centre**

EtonHouse Community Fund, an IPC Charity was launched to support children and youth from all walks of life in Singapore

IGCSE Secondary Programme launched in EtonHouse

2015

10

11

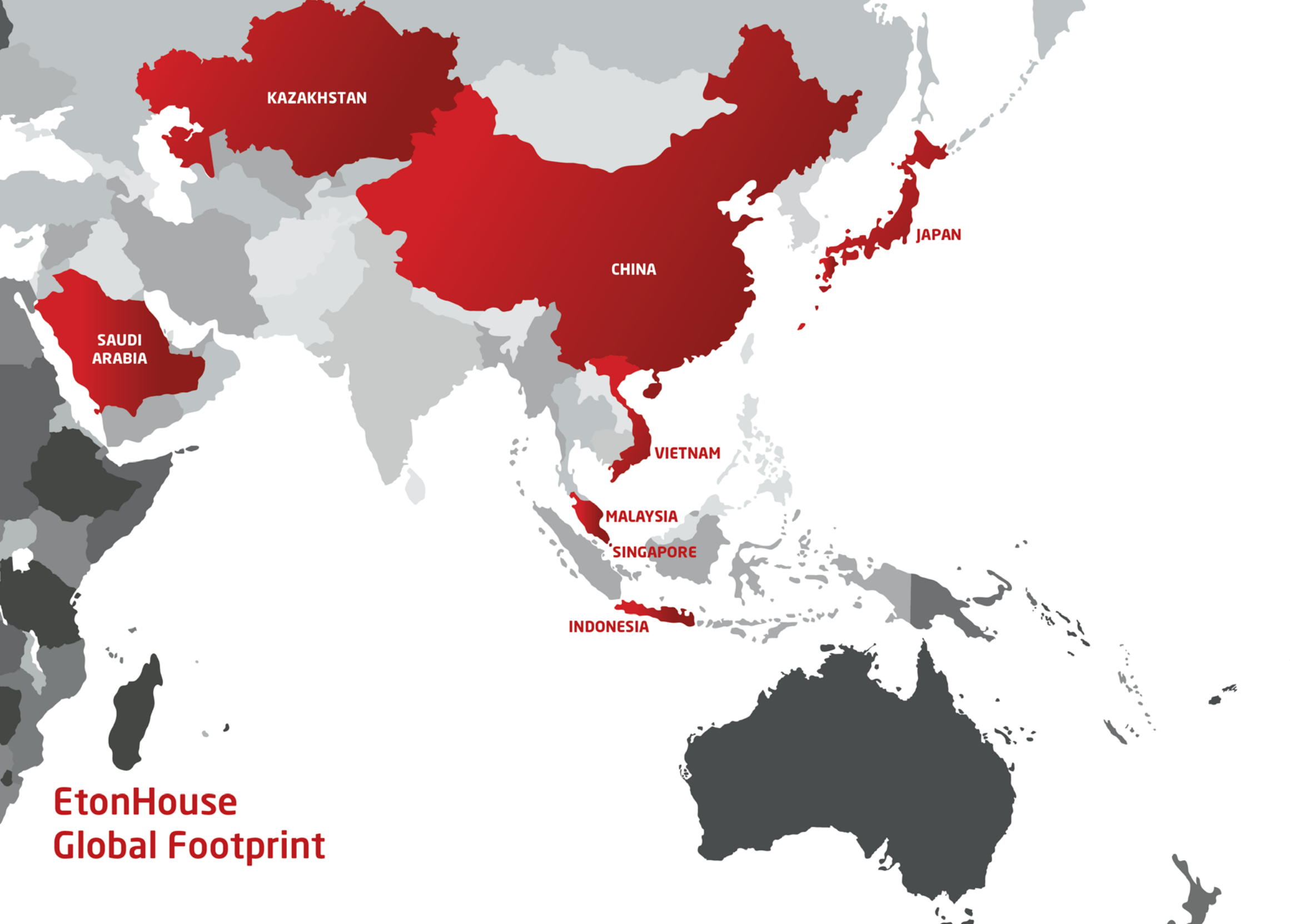
2016

EtonHouse International School in Suzhou received **IB Diploma Authorisation**

EtonHouse schools in Kuala Lumpur, Malaysia; Chengdu, China; and Mountbatten 718, Singapore received the **IB World School status**



MILESTONES



KAZAKHSTAN

CHINA

SAUDI
ARABIA

JAPAN

VIETNAM

MALAYSIA

SINGAPORE

INDONESIA

EtonHouse
Global Footprint

EtonHouse®

International Education Group

Shaping the future through education

SINGAPORE

Global Corporate Office, 8 Stevens Road, Singapore 257819
Tel / +65 6746 3333 Email / admissions@etonhouse.edu.sg



www.etonhouse.edu.sg